

CD

# BRAZIL

Albums  
Promotional Releases  
Promo-Stamp Releases

## PINK FLOYD CD DISCOGRAPHY

Copyright © 2003-2010 Hans Gerlitz. All rights reserved.  
[www.pinkfloyd-forum.de/discography](http://www.pinkfloyd-forum.de/discography)  
[hans.gerlitz@gmx.de](mailto:hans.gerlitz@gmx.de)

This discography is a reference guide, not a book on the artwork of Pink Floyd. The photos of the artworks are used solely for the purposes of distinguishing the differences between the releases. The product names used in this document are for identification purposes only. All trademarks and registered trademarks are the property of their respective owners.

Permission is granted to download and print this document for personal use. Any other use including but not limited to commercial or profitable purposes or uploading to any publicly accessible web site is expressly forbidden without prior written consent of the author.

## PINK FLOYD CD DISCOGRAPHY

# BRAZIL Albums

---

### The Piper at the Gates of Dawn



**Label:** EMI

**Catalog number:**

CD 368 746384 2 (on case spine)

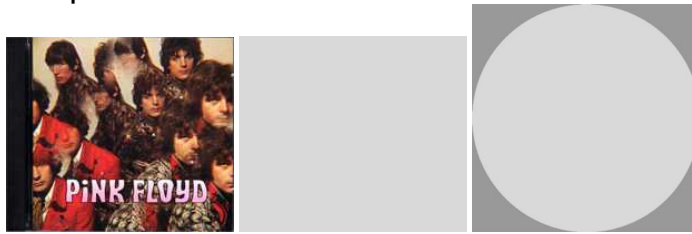
CD 368 746384 2 (on rear cover)

368 746384 2 (on CD)

**Country of origin:** Brazil

**Notes:** Original issue. Issued in a standard jewel case with a booklet.

### The Piper at the Gates of Dawn



**Label:** EMI

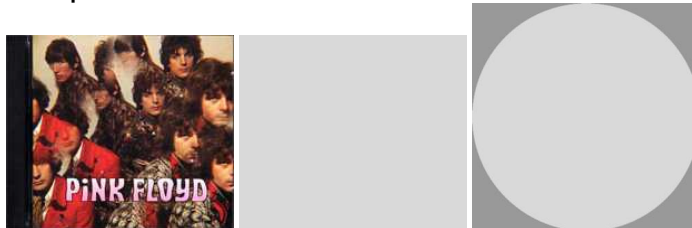
**Catalog number:**

8 35631 2

**Country of origin:** Brazil

**Notes:** Digitally remastered 1994. Issued in a standard jewel case with a 24 page booklet.

### The Piper at the Gates of Dawn



**Label:** EMI

**Catalog number:**

7243 8 35631 2 8

**Country of origin:** Brazil

**Notes:** Digitally remastered 1994. Reissue. Issued in a standard jewel case with a 24 page booklet.

### A Saucerful of Secrets



**Label:** EMI

**Catalog number:**

368 746383 2 (on case spine)

368 746383 2 (on CD)

**Country of origin:** Brazil

**Notes:** Original issue. Issued in a standard jewel case with a booklet.

### A Saucerful of Secrets



**Label:** EMI

**Catalog numbers:**

8 29751 2 (on case spine)

368 829751 2 (on rear cover)

724382975120 (barcode on rear cover)

7243 8 29751 2 0 LC 0542 (on CD)

**Country of origin:** Brazil (CD: Holland)

**Notes:** Digitally Remastered 1994. Issued in a standard jewel case with a 16 page booklet. "MADE IN BRAZIL" printed on rear cover. Catalog number on page 16 of booklet: 8 29751 2.

### A Saucerful of Secrets



**Label:** EMI

**Catalog number:**

7243 8 29751 2 0

**Country of origin:** Brazil

**Notes:** Digitally remastered 1994. Reissue. Issued in a standard jewel case with a 16 page booklet.

### More



**Label:** EMI

**Catalog number:**

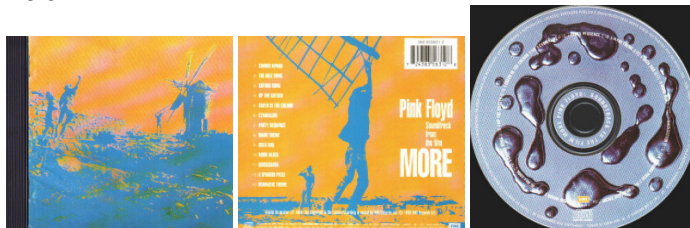
368 746386 2 (on case spine)

368 746386 2 (on CD)

**Country of origin:** Brazil

**Notes:** Original issue. Issued in a standard jewel case with a booklet.

### More



**Label:** EMI

**Catalog number:**

8 35631 2 (on case spine)

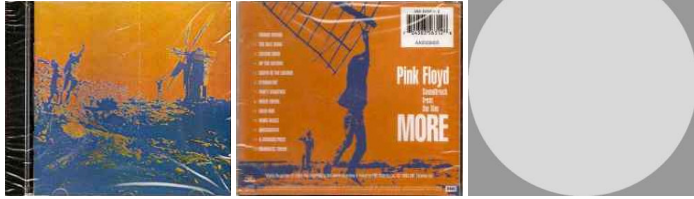
7 24383 56312 8 (barcode on rear cover)

368 835631 2 (on rear cover)

**Country of origin:** Brazil

**Notes:** Digitally remastered 1995. Issued in a standard jewel case with a 20 page booklet.

**More**



**Label:** EMI

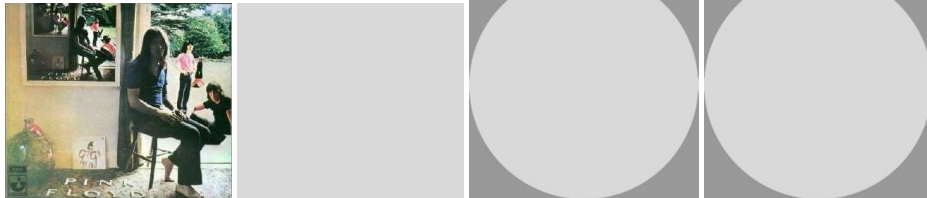
**Catalog number:**

7243 8 35631 2 8

**Country of origin:** Brazil

**Notes:** Digitally remastered 1995. Reissue. Issued in a standard jewel case with a 20 page booklet.

**Ummagumma**



**Label:** EMI

**Catalog number:**

386 46404 2

**Country of origin:** Brazil

**Notes:** Original issue. Issued in a thick box with a booklet.

**Ummagumma**



**Label:** EMI

**Catalog number:**

8 31214 2

831214 2 (on case spine CD 1)

7 24383 12142 7 (barcode on rear cover CD 1)

672 831214 2 (on rear cover CD 1)

8 31202 2 8312142 (on CD 1)

? (on case spine CD 2)

? (barcode on rear cover CD 2)

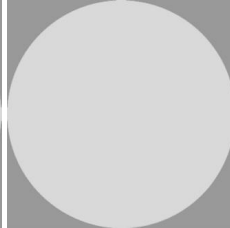
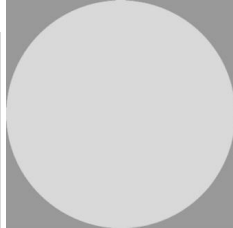
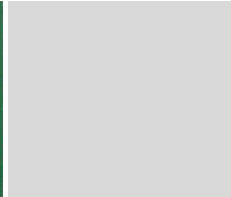
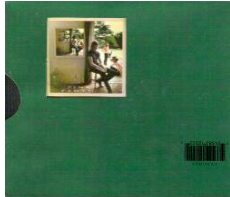
? (on rear cover CD 2)

? (on CD 2)

**Country of origin:** Brazil

**Notes:** Digitally remastered 1994. Disc 1 & 2 issued in separate standard jewel cases. Each CD has a 16 page booklet.

### Ummagumma



**Label:** EMI

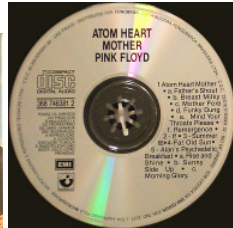
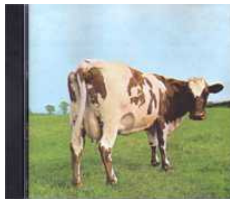
**Catalog number:**

7243 8 31202 2 2

**Country of origin:** Brazil

**Notes:** Digitally remastered 1994. Reissue. Disc 1 & 2 issued in separate standard jewel cases. Each CD has a 16 page booklet.

### Atom Heart Mother



**Label:** EMI

**Catalog numbers:**

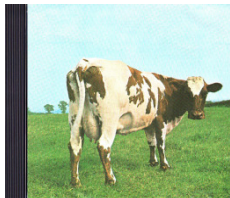
CD 368 746381 2 (on case spine)

368 746381 2 (on CD)

**Country of origin:** Brazil

**Notes:** Original issue. Issued in a standard case with a 4 page booklet. "P 1989 - INDUSTRIA BRASILEIRA " printed on rear cover and rear booklet. According to matrix information (CDP 746381 2 AR 1 EMI SWINDON) this CD was pressed in the UK.

### Atom Heart Mother



**Label:** EMI

**Catalog numbers:**

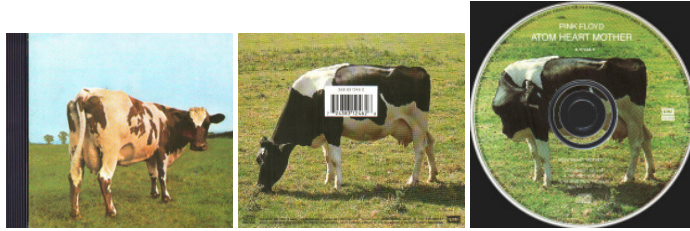
CD 368 746381 2 (on case spine)

746381 2 (on CD)

**Country of origin:** Brazil

**Notes:** Original issue. Issued in a standard case with a 4 page booklet.

**Atom Heart Mother**



**Label:** EMI

**Catalog numbers:**

8 31246 2 (on case spine)

7 24383 12462 6 (barcode on rear cover)

368 831246 2 (on rear cover)

8 31246 2 (on CD)

**Country of origin:** Brazil

**Notes:** Remastered issue. Issued in a standard jewel case with a 20 page booklet. "MADE IN BRAZIL" printed on rear cover and CD. Catalog number on page 20 of booklet: 8 31246 2.

**Relics**



**Label:** EMI

**Catalog number:**

8 35603 2 (on case spine)

7 24383 56032 5 (barcode on rear cover)

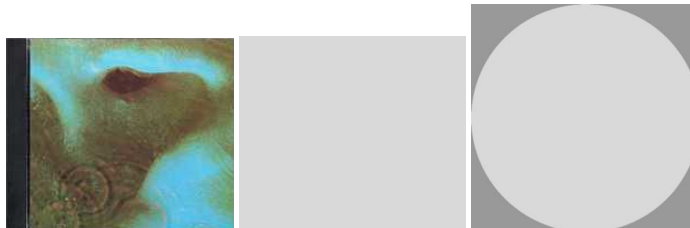
368 835603 2 (on rear cover)

8 35603 2 (on CD)

**Country of origin:** Brazil

**Notes:** Digitally remastered 1995. Reissue. Issued in a standard jewel case with a 16 page booklet.

**Meddle**



**Label:** EMI

**Catalog number:**

368 746034 2

**Country of origin:** Brazil

**Notes:** Original issue. Issued in a standard jewel case with a booklet.

**Meddle**



**Label:** EMI

**Catalog numbers:**

8 29749 2 (on case spine)

7 24382 97492 5 (barcode on rear cover)

368 829749 2 (on rear cover)  
8 29749 2 (on CD)

**Country of origin:** Brazil

**Notes:** Remastered issue. Issued in a standard case with a booklet.

**Meddle**



**Label:** EMI

**Catalog numbers:**

8 29749 2 (on case spine)  
7 24382 97492 5 (barcode on rear cover)  
368 829749 2 (on rear cover)  
7243 8 29749 2 5 (on CD)

**Country of origin:** Brazil

**Notes:** Remastered issue. Issued in a standard case with a booklet.

**Meddle**



**Label:** EMI

**Catalog numbers:**

7243 8 29749 2 5 (on case spine)  
368 829749 2 and AB0002400 (on rear cover)  
7 24382 97492 5 (barcode on rear cover)  
? (on CD)

**Country of origin:** Brazil

**Notes:** Remastered issue. Issued in a standard case with a booklet. This issue has an additional number (AB0002400) on rear cover (near the barcode).

**Obscured By Clouds**



**Label:** EMI

**Catalog number:**

368 46385 2

**Country of origin:** Brazil

**Notes:** Original issue. Issued in a standard jewel case with a booklet.



**Obscured By Clouds****Label:** EMI**Catalog number:**

8 35609 2 (on case spine)

7 24383 56092 9 (barcode on rear cover)

368 835609 2 (on rear cover)

8 35609 2 (on CD)

**Country of origin:** Brazil**Notes:** Digitally remastered 1995. Issued in a standard jewel case with a 24 page booklet.**Obscured By Clouds****Label:** EMI**Catalog number:**

7243 8 35609 2 9

**Country of origin:** Brazil**Notes:** Digitally remastered 1995. Reissue. Issued in a standard jewel case with a 24 page booklet.**The Dark Side of the Moon****Label:** EMI**Catalog number:**

368 746001 2

**Country of origin:** Brazil**Notes:** Original issue. Issued in a standard case with a booklet.**The Dark Side of the Moon****Label:** EMI**Catalog numbers:**

746001 2 (on case spine)

368 746001 2 (on rear cover)

746001 2 (on CD)

**Country of origin:** Brazil**Notes:** Issued in a standard jewel case with 'old' artwork. CD looks as the remastered 20<sup>th</sup> anniversary version. Relief and prisma on CD in blue, text on the CD in white. No barcode.

### The Dark Side of the Moon



**Label:** EMI

**Catalog numbers:**

8 29752 2 (on case spine)

368 829752 2 (on rear cover)

7 24382 97522 9 (barcode on rear cover)

8 29752 2 (on CD)

**Country of origin:** Brazil

**Notes:** Remastered issue. Issued in a standard case with a 24 page booklet. "flapf" hologram sticker on front case. "MADE IN BRAZIL" printed on rear cover and CD. Catalog number on page 24 of booklet: 8 29752 2.

### The Dark Side of the Moon



**Label:** EMI

**Catalog numbers:**

7243 582136 2 1 (on case spine)

7 24358 21362 1 (barcode on rear cover)

7 24358 21362 1 (on rear cover)

7243 582136 2 1 (582 1362), LC 0542 (on SACD)

**Country of origin:** Artwork: Brazil, SACD: Japan

**Notes:** Issued in a standard case with a 20 page booklet. "Made in Brazil" printed on rear cover ; "Made in Japan" & "bel BIEM" printed on SACD. Black/blue/white sticker on cover: "PINK FLOYD THE DARK SIDE OF THE MOON 30TH ANNIVERSARY EDITION SACD O SACD Hibrido tem som stereo em ... 7243 582136 2 1".

### Wish You Were Here



**Label:** CBS

**Catalog numbers:**

700.108 (on case spine and CD)

**Country of origin:** Brazil

**Notes:** Original issue. Issued in a standard case with a 8 page fold out slick. "Fabricado pela MICROSERVICE Microfilmagens e Reproduções Técnicas Ltda. ... São Paulo "CBS" (logo) Marcas Registradas – Indústria Brasileira ..." printed on rear cover and on rear of fold out slick. "FABRICADO PELA - MICROSERVICE MICROFILMAGENS E REPRODUÇÕES TÉCNICAS LTDA. ... SÃO PAULO - INDÚSTRIA BRASILEIRA." printed on top edge of the CD.

**Wish You Were Here**



**Label:** Columbia

**Catalog numbers:**

700.108 (on case spine and CD)

**Country of origin:** Brazil

**Notes:** Original issue. Issued in a standard case with a fold out slick. "Fabricada pela Microservice..." and "Sony Music - Marca Registrada..." printed on rear cover.

**Wish You Were Here**



**Label:** Columbia

**Catalog numbers:**

700.108 (on case spine)

700.108 and DIDP 076826 (on CD)

**Country of origin:** Brazil

**Notes:** Original issue. Issued in a standard case with a 8 page fold out slick. "Fabricado por DADC-USA para Sony Music Entertainment (Brasil) Ind. E Com. Ltda. ... Rio de Janeiro – Brasil" printed on rear cover, on rear of fold out slick and (in capital letters) on top edge of the CD.

**Wish You Were Here**



**Label:** Columbia

**Catalog numbers:**

700.108 (on case spine)

700.108 (on CD)

**Country of origin:** Brazil

**Notes:** Original issue. Issued in a standard case with a 8 page fold out slick. The Columbia logo on the CD is blue. "Fabricado e distribuido por Sony Music Entertainment (Brasil) Ind. Com. Ltda. ... Rio de Janeiro – Indústria Brasileira. ..." printed on rear cover and on rear of fold out slick. "Fabricado por Sony Music Entertainment (Brasil) Indústria Comércio Ltda. ... Rio de Janeiro – Indústria Brasileira ." printed on top edge of the CD.

**Wish You Were Here**



**Label:** Columbia

**Catalog numbers:**

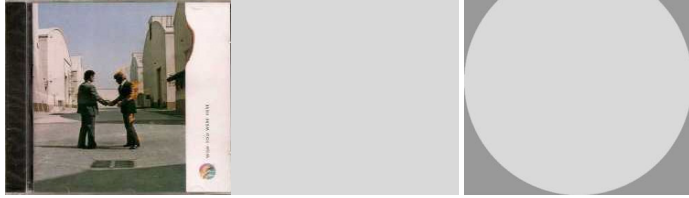
700.108/2-053753 (on case spine)

5 099705 375327 (barcode on rear cover)  
700.108 (on CD)

**Country of origin:** Brazil

**Notes:** Original issue. Issued in a standard case with a fold out slick.

**Wish You Were Here**



**Label:** Columbia

**Catalog number:**

700.108/2-053753

**Country of origin:** Brazil

**Notes:** Digitally remastered 1992. Issued in a standard jewel case with a 16 page booklet.

**Wish You Were Here**



**Label:** EMI

**Catalog number:**

7243 8 29750 2 1

**Country of origin:** Brazil

**Notes:** Digitally remastered 1992. Reissue. Issued in a standard jewel case with a 16 page booklet.

**Animals**



**Label:** CBS

**Catalog numbers:**

700.109 (on case spine)

700.109 (on CD)

**Country of origin:** Brazil

**Notes:** Issued in a standard jewel case with a 12 page fold out slick. CBS printed on the CD and on the rear of fold out slick. No barcode.

**Animals**



**Label:** Columbia

**Catalog numbers:**

700.109 (on case spine)

700.109 (on CD)

**Country of origin:** Brazil

**Notes:** Issued in standard jewel case with a 12 page fold out slick. COLUMBIA printed on the CD No barcode.  
"Fabricado por Sony Music ... Brasil" printed on the CD. This issue has no DIDP on CD.

### Animals



**Label:** Columbia

**Catalog numbers:**

700.109 (on case spine)

700.109 and DIDP 076735 (on CD)

**Country of origin:** Brazil

**Notes:** Issued in standard jewel case with a 12 page fold out slick. COLUMBIA printed on the CD and on the rear of fold out slick. No barcode. "Fabricado por DADC -USA para Sony Music Entertainment (Brasil) Ind. e Com. Ltda. ... Rio de Janeiro – Brasil" printed on rear cover, on rear of fold out slick and (in capital letters) on top edge of the CD.

### Animals



**Label:** EMI

**Catalog numbers:**

8 29748 2 (on case spine and CD)

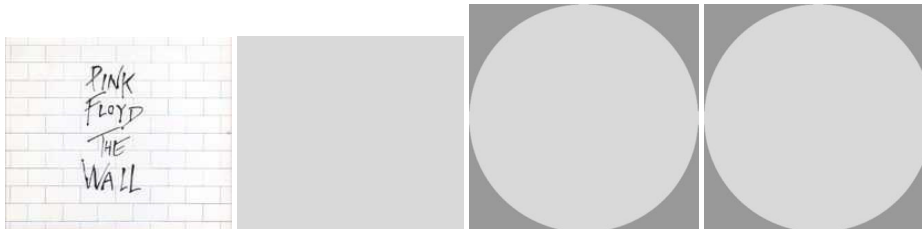
368 8297482 6 (on rear cover)

7 24382 97482 6 (barcode on rear cover)

**Country of origin:** Brazil

**Notes:** Remastered issue. Issued in a standard case with a booklet.

### The Wall



**Label:** Columbia

**Catalog numbers:**

700034/5 (on case spine)

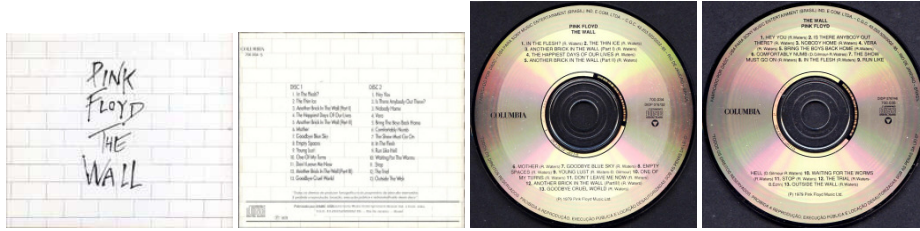
CK 36184 C2K 36183 (on CD1)

CK 36185 C2K 36183 (on CD2)

**Country of origin:** Brazil

**Notes:** Original issue.

**The Wall**



**Label:** Columbia

**Catalog numbers:**

700034/5 (on case spine)

700034/5 (on rear cover)

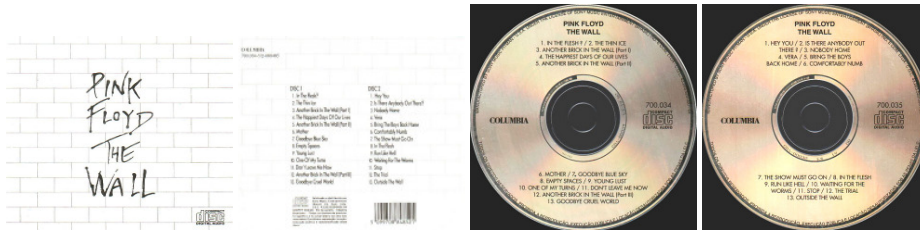
700.034 DIDP 076732 (on CD1)

DIDP 076746 700.035 (on CD2)

**Country of origin:** Brazil

**Notes:** Original issue. Issued in a thick box with an 8 page fold out slick. COLUMBIA printed left from centre hole on the CDs. "Fabricado por DADC -USA para Sony Music Entertainment (Brasil) Ind. e Com. Ltda. ... Rio de Janeiro – Brasil" printed on rear cover, on rear of fold out slick and (in capital letters) on top edge of the CDs.

**The Wall**



**Label:** Columbia

**Catalog numbers:**

700.034-5/2-088485 (on case spine)

5 099708 848521 (barcode on rear cover)

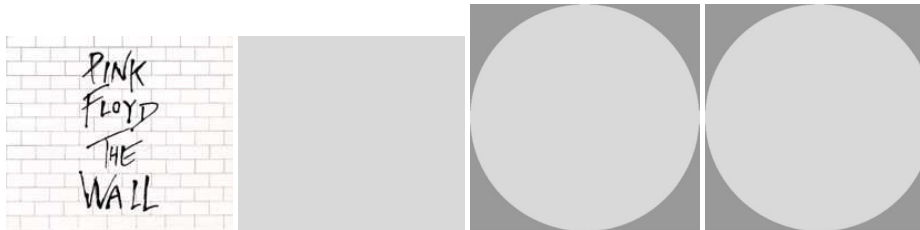
700.034 (on CD1)

700.035 (on CD2)

**Country of origin:** Brazil

**Notes:** Original issue. 8 page fold out slick. COLUMBIA printed left from centre hole on the CDs. This issue has no DIDP numbers on CDs as the issue above.

**The Wall**



**Label:** Columbia

**Catalog number:**

700.034-5/2-088485

**Country of origin:** Brazil

**Notes:** Digitally remastered 1994. Issued in a thick box with a 24 page booklet.

**The Wall**



**Label:** EMI

**Catalog number:**

7243 8 31243 2 9

**Country of origin:** Brazil**Notes:** Digitally remastered 1994. Reissue. Issued in a thick box with a 24 page booklet.**A Collection of Great Dance Songs****Label:** Columbia**Catalog numbers:**

700.539/2.467565 (on case spine)

700.539/2.467565 (on rear cover)

700.539/2-467565 (on CD)

**Country of origin:** Brazil**Notes:** Original issue. Issued in a standard case with a 4 page fold out slick. COLUMBIA printed on the CD (in blue) and on rear of fold out slick; other printing on the CD is black.

"Fabricado e distribuido por Sony Music Entertainment (Brasil) Ind. Com. Ltda. ... Rio de Janeiro – Indústria Brasileira ..."  
 printed on rear cover and on rear of fold out slick. "Fabricado por Sony Music Entertainment (Brasil) Indústria Comércia Ltda. ...  
 Rio de Janeiro – Indústria Brasileira ." printed on top edge of the CD.

**A Collection of Great Dance Songs****Label:** Columbia**Catalog numbers:**

700.539/2.467565 (on case spine)

700.539/2.467565 (on rear cover)

700.539/2-467565 (on CD)

**Country of origin:** Brazil**Notes:** Original issue. Issued in a standard case with a 4 page fold out slick. COLUMBIA printed on the CD (in blue) and on the rear of fold out slick; other printing on the CD is purple.**A Collection of Great Dance Songs****Label:** Columbia**Catalog numbers:**

700.539/2.467565 (on case spine)

700.539/2.467565 (on rear cover)

700.539/2-467565 (on CD)

**Country of origin:** Brazil**Notes:** Original issue. Issued in a standard case with a 4 page fold out slick. COLUMBIA printed on the CD. All printings on the CD in black.

N

### The Final Cut



**Label:** Columbia

**Catalog numbers:**

700.221/2-25416 (on case spine)

700.221/2-25416 (on rear cover)

DIDP 076741 and 700.221/2-25416 (on CD)

**Country of origin:** Brazil

**Notes:** Original issue. Issued in a standard case with an 8 page fold out slick.

"Fabricado por DADC-USA para Sony Music Entertainment (Brasil) Ind. e Com. Ltda. ... Rio de Janeiro – Brasil" printed on rear cover, on rear of fold out slick and (in capital letters) on top edge of the CD.

### The Final Cut



**Label:** Columbia

**Catalog numbers:**

746.057/2-25416 (on both case spines)

AK0010000 (also on the other case spine)

5 099702 541626 (barcode on rear cover)

746.057/2-25416 (on rear cover)

700.221/2-25416 (on CD)

**Country of origin:** Brazil

**Notes:** Original issue. Issued in a standard case with a 12 page fold out slick. COLUMBIA printed on the CD and on the rear of fold out slick; "FABRICADO POR SONY MUSIC – INDÚSTRIA BRASILEIRA" printed on CD, "Sony Music MARKETING ESPECIAL" printed on rear fold out slick and on rear cover, "Fabricado por Sony Music ...Indústria Brasileira ..." printed on rear cover.

### The Final Cut



**Label:** Columbia/Sony Music

**Catalog numbers:**

746.057/2-25416 (on both case spines)

AE0003500 (also on the other case spine)

5 099702 541626 (barcode on rear cover)

746.057/2-25416 (on rear cover)

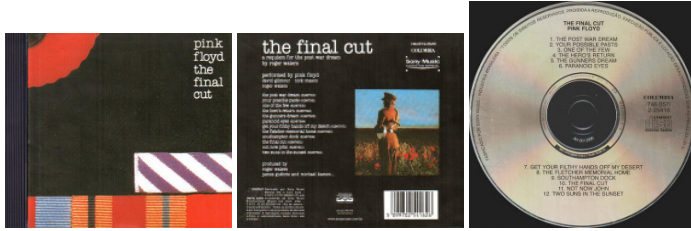
746.057/2-25416 (on CD)

**Country of origin:** Brazil

**Notes:** Original issue. Issued in a standard case with a booklet. "Best Price" stamp on the CD.



**The Final Cut**



**Label:** Columbia/Sony Music

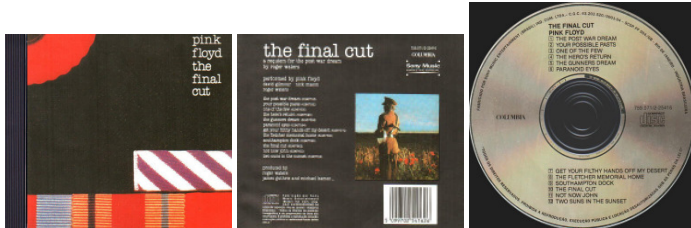
**Catalog numbers:**

- 746.057/2-25416 (on both case spines)
- AH0012000 (also on the other case spine)
- 5 099702 541626 (barcode on rear cover)
- 746.057/2-25416 (on rear cover)
- 746.057/2-25416 (on CD)

**Country of origin:** Brazil

**Notes:** Original issue. Issued in a standard case with a booklet.

**The Final Cut**



**Label:** Columbia

**Catalog numbers:**

- 759.071/2-25416 (on case spine)
- 5099702541626 (barcode on rear cover)
- 759.071/2-25416 (on rear cover)
- 759.071/2-25416 (on CD)

**Country of origin:** Brazil

**Notes:** Original issue. Issued in a standard case with a booklet.

**The Final Cut**



**Label:** EMI

**Catalog number:**

7243 5 76946 2 9

**Release date:** 2004

**Country of origin:** Brazil

**Notes:** Digitally remastered 2004. Issued in a standard jewel case with a booklet. Includes 'When the Tigers Broke Free'.

**A Momentary Lapse of Reason**



**Label:** CBS

**Catalog numbers:**

700021 (on case spine)

700.021 (on rear cover)  
700.021 (on CD)

**Country of origin:** Brazil

**Notes:** Original issue. Issued in a standard case with a 6 page fold out slick. "Fabricado pela MICROSERVICE Microfilmagens e Reproduções Técnicas Ltda. ... São Paulo "CBS" (logo) Marcas Registradas – Indústria Brasileira ..." printed on rear cover and on rear of fold out slick. "FABRICADO PELA - MICROSERVICE MICROFILMAGENS E REPRODUÇÕES TÉCNICAS LTDA. ... SÃO PAULO - INDÚSTRIA BRASILEIRA." printed on top edge of the CD.

**A Momentary Lapse of Reason**



**Label:** Columbia

**Catalog numbers:**

700021 (on case spine)

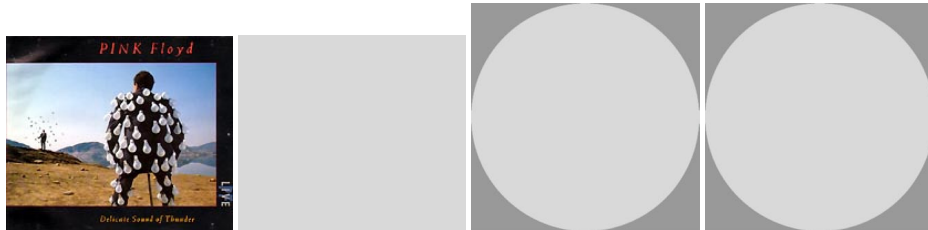
700.021 (on rear cover)

700.021 (on CD)

**Country of origin:** Brazil

**Notes:** Original issue. Issued in a standard case with a booklet.

**Delicate Sound Of Thunder**



**Label:** CBS

**Catalog numbers:**

700128-9 / 2-463161 (on case spine)

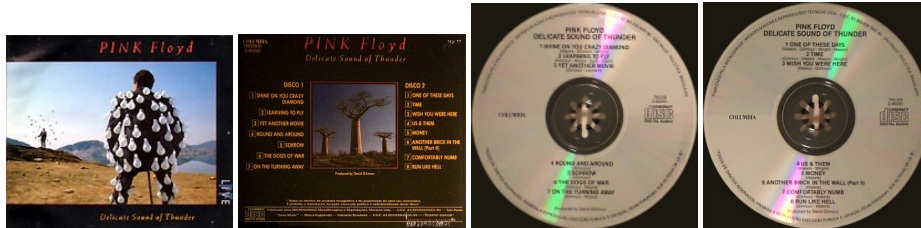
700128 2-463161 (on CD 1)

700129/ 2-463161 (on CD 2)

**Country of origin:** Brazil

**Notes:** 4 page booklet. CBS printed left of centre hole on the CDs.

**Delicate Sound Of Thunder**



**Label:** Columbia

**Catalog numbers:**

700128-9/2-463161 (on case spine)

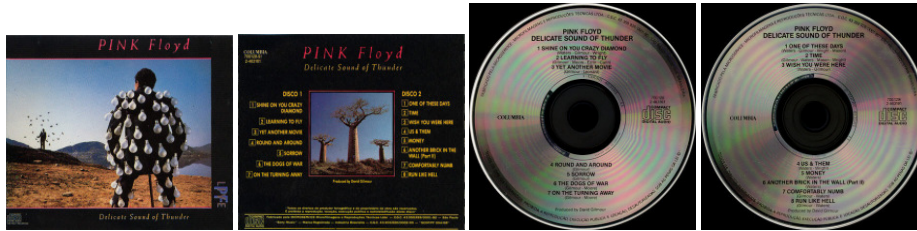
700128 2-463161 (on CD 1)

700129 2-463161 (on CD 2)

**Country of origin:** Brazil

**Notes:** Issued in a thick box with a 4 page fold out slick. COLUMBIA printed left from centre hole on the CDs. "Fabricado pela MICROSERVICE Microfilmagens e Reproduções Técnicas Ltda. ... São Paulo "Sony Music" – Marca Registrada – Indústria Brasileira ..." printed on rear cover and on rear of fold out slick. "FABRICADO PELA MICROSERVICE - MICROFILMAGENS E REPRODUÇÕES TÉCNICAS LTDA. ... SÃO PAULO - INDÚSTRIA BRASILEIRA." printed on top edge of the CDs.

**Delicate Sound Of Thunder**



**Label:** Columbia

**Catalog numbers:**

700128-9/2-463161 (on case spine)

700128-9/2-463161 (on rear cover)

700128 2-463161 (on CD 1)

700129 2-463161 (on CD 2)

**Country of origin:** Brazil

**Notes:** Issued in a thick box with a 4 page booklet. COLUMBIA printed left from centre hole on the CDs. Both CDs have a black ring.

**The Division Bell**



**Label:** Columbia

**Catalog numbers:**

758.193/2-476581 (on case spine)

5 099747 658129 (barcode on rear cover)

758.193/2-476581 (on rear cover)

758.193/2-476581 (on CD)

**Country of origin:** Brazil

**Notes:** Issued in a standard case with a 24 booklet. "Fabricado por Sony Music Entertainment (Brasil) Ind. Com. Ltda. ... Rio de Janeiro - Indústria Brasileira ..." printed on rear cover. "FABRICADO POR SONY MUSIC ENTERTAINMENT (BRASIL) INDÚSTRIA COMÉRCIO LTDA. ... RIO DE JANEIRO - INDÚSTRIA BRASILEIRA." printed on top edge of the CD.

**The Division Bell**



**Label:** Columbia

**Catalog numbers:**

758.193/2-476581 (on case spine)

5 099747 658129 (barcode on rear cover)

758.193/2-476581 (on rear cover)

CK 64200 (on CD)

**Country of origin:** Brazil

**Notes:** Issued in a standard case with a 24 booklet.

**Echoes**





**Label:** EMI

**Catalog numbers:**

2 CD 536111 2 (on case spine and edge of slipcase)

7 24353 61112 5 (barcode on rear cover of slipcase and case)

652 536111 2 (on rear cover of slipcase and case)

36111 2 (on front sticker)

536111 2, LC 0542 and (5361122), (on CD1)

536111 2, LC 0542 and (5361132) (on CD2)

**Country of origin:** Brazil

**Notes:** Issued in a double slimline case inside a card slipcase (shown). Includes a 32 page booklet. "Made in Brazil" printed on rear cover of slipcase and case. "Indústria Brasileira" printed on the CDs. Title sticker on front cellophane and small holographic ifpi sticker on front slipcase.

### Echoes



**Label:** EMI

**Catalog numbers:**

2 CD 536111 2 (on case spine)

7 24353 61112 5 (barcode on rear cover)

652 536111 2 (on rear cover)

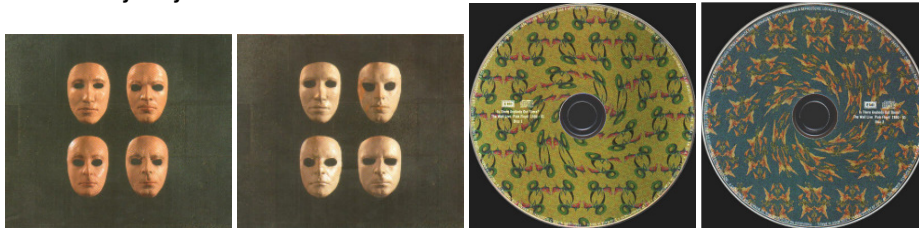
536111 2, LC 0542 and (5361122), (on CD1)

536111 2, LC 0542 and (5361132) (on CD2)

**Country of origin:** Brazil

**Notes:** Issued in a double slimline case without the slipcase.

### Is There Anybody Out There?



**Label:** EMI

**Catalog numbers:**

7243 5 24075 2 1

**Country of origin:** Brazil

**Notes:** Issued in a thick box with two 28 page booklets.

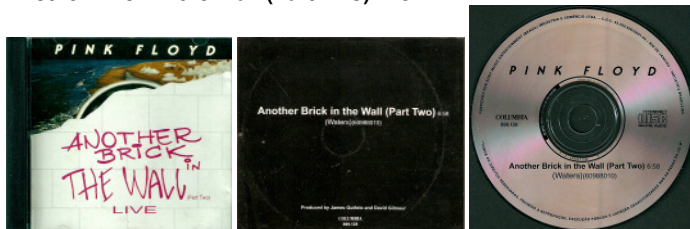
## PINK FLOYD CD DISCOGRAPHY

**BRAZIL** Promotional Releases**The Dark Side of the Moon****Label:** EMI**Catalog number:**

0777 7 81479 2 3 (barcode sticker on rear of CD cover)

077778147923, D: F:PM518 UK : and CDDSOM20 (on barcode sticker)

CDP 7460012 (on CD)

**Country of origin:** Box: probably UK, Artwork: UK, CD: NL, Inserts: UK and Brazil**Notes:** Issued in a cardboard box. Includes the XX<sup>th</sup> anniversary CD, additional photo, some supporting material and three 35mm colour slides. Nothing is printed on the slides. Additional red insert in Portuguese (shown).**Another Brick in the Wall (Part Two) live****Label:** Columbia**Catalog numbers:**

899.128 (on case spine and rear cover)

899.128 (on CD)

**Country of origin:** Brazil**Notes:** A one track promo CD issued in a standard CD case with a double sided insert. Issued to promote the Pulse album. Includes: Another Brick in the Wall (Part Two).

PINK FLOYD CD DISCOGRAPHY

# BRAZIL Promo-Stamp Releases

## Obscured by Clouds



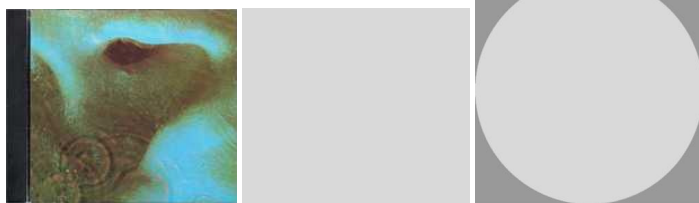
**Label:** EMI

**Catalog number:**  
368 746385 2

**Country of origin:** Brazil

**Notes:** Promotional issue. Issued in a standard case with a booklet. "EXEMPLAR PROMOCIONAL VENDA PROIBIDA" printed on backcover and the CD.

## Meddle



**Label:** EMI/Harvest

**Catalog numbers:**  
368 746034 2 (on case spine)

**Country of origin:** Brazil

**Notes:** Promotional issue.

## The Dark Side of the Moon



**Label:** EMI/Harvest

**Catalog numbers:**  
368 746001 2 (on case spine)

**Country of origin:** Brazil

**Notes:** Promotional issue.

## Wish You Were Here



**Label:** CBS

**Catalog numbers:**  
700.108 (on case spine and CD)

**Country of origin:** Brazil

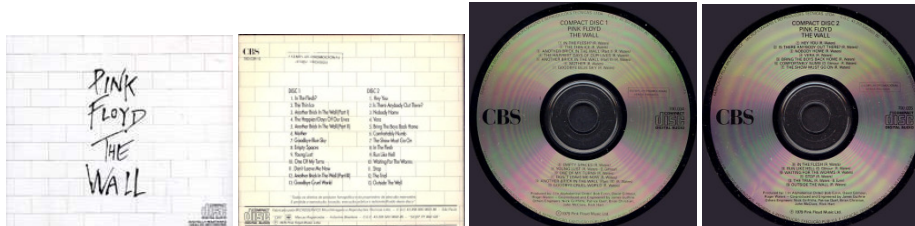
**Notes:** Promotional issue. Issued in a standard case with a 8 page fold out slick. Promotional stamp “EXEMPLAR PROMOCIONAL VENDA PROIBIDA” printed on CD and rear cover. “Fabricado pela MICROSERVICE Microfilmagens e Reproduções Técnicas Ltda. ... São Paulo “CBS” (logo) Marcas Registradas – Indústria Brasileira ...” printed on rear cover and on rear of fold out slick. “FABRICADO PELA - MICROSERVICE MICROFILMAGENS E REPRODUÇÕES TÉCNICAS LTDA. ... SÃO PAULO - INDÚSTRIA BRASILEIRA.” printed on top edge of the CD.

**Animals****Label:** CBS**Catalog numbers:**

700.109 (on case spine and CD)

**Country of origin:** Brazil

**Notes:** Promotional issue. Issued in a standard case with a 12 page fold out slick. Promotional stamp “EXEMPLAR PROMOCIONAL VENDA PROIBIDA” printed on CD and rear cover. “Fabricado pela MICROSERVICE Microfilmagens e Reproduções Técnicas Ltda. ... São Paulo “CBS” (logo) Marcas Registradas – Indústria Brasileira ...” printed on rear cover and on rear of fold out slick. “FABRICADO PELA - MICROSERVICE MICROFILMAGENS E REPRODUÇÕES TÉCNICAS LTDA. ... SÃO PAULO - INDÚSTRIA BRASILEIRA.” printed on top edge of the CD.

**The Wall****Label:** CBS**Catalog numbers:**

700034/5 (on case spine)

700.034/5 (on rear cover)

700.034 (on CD 1)

700.035 (on CD 2)

**Country of origin:** Brazil

**Notes:** Promotional issue. Issued in a thick box with an 8 page fold out slick. CBS printed left of centre hole on the CDs. Promotional stamp “EXEMPLAR PROMOCIONAL VENDA PROIBIDA” printed on CDs and rear cover. “Fabricado pela MICROSERVICE Microfilmagens e Reproduções Técnicas Ltda. ... São Paulo “CBS” (logo) Marcas Registradas – Indústria Brasileira ...” printed on rear cover and on rear of fold out slick. “FABRICADO PELA - MICROSERVICE MICROFILMAGENS E REPRODUÇÕES TÉCNICAS LTDA. ... SÃO PAULO - INDÚSTRIA BRASILEIRA.” printed on top edge of the CDs.

**A Collection of Great Dance Songs****Label:** CBS**Catalog number:**

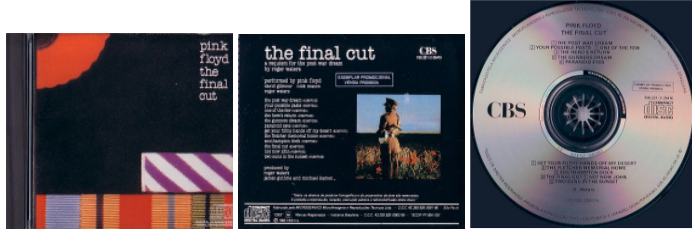
700.539/2-467565 (on case spine and rear cover)

700.539/2-467565 (on CD)

**Country of origin:** Brazil

**Notes:** Promotional issue. Issued in a standard case with a 4 page fold out slick. Promotional stamp “EXEMPLAR PROMOCIONAL VENDA PROIBIDA” printed on CD and rear cover. “Fabricado pela MICROSERVICE Microfilmagens e Reproduções Técnicas Ltda. ... São Paulo “CBS” (logo) Marcas Registradas – Indústria Brasileira ...” printed on rear cover and on rear of fold out slick. “FABRICADO PELA - MICROSERVICE MICROFILMAGENS E REPRODUÇÕES TÉCNICAS LTDA. ... SÃO PAULO - INDÚSTRIA BRASILEIRA.” printed on top edge of the CD.

### The Final Cut



**Label:** CBS

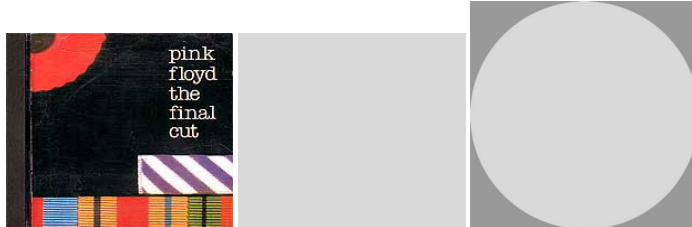
**Catalog number:**

700.221/2-25416

**Country of origin:** Brazil

**Notes:** Promotional issue. Issued in a standard case with an 8 page fold out slick. Promotional stamp "EXEMPLAR PROMOCIONAL VENDA PROIBIDA" printed on CD and rear cover. "Fabricado pela MICROSERVICE Microfilmagens e Reproduções Técnicas Ltda. ... São Paulo "CBS" (logo) Marcas Registradas – Indústria Brasileira ..." printed on rear cover and on rear of fold out slick. "FABRICADO PELA - MICROSERVICE MICROFILMAGENS E REPRODUÇÕES TÉCNICAS LTDA. ... SÃO PAULO - INDÚSTRIA BRASILEIRA." printed on top edge of the CD.

### The Final Cut



**Label:** Columbia

**Catalog numbers:**

CDCOL 5025 K (on case spine)

5099702541626 (barcode on rear cover)

**Country of origin:** Brazil

**Notes:** Promotional issue.

### A Momentary Lapse of Reason



**Label:** CBS

**Catalog number:**

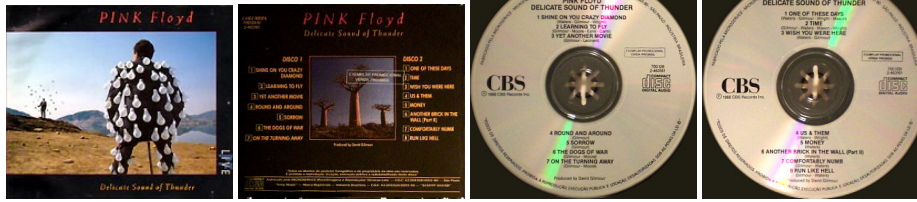
700.021 (on case spine, rear cover and CD)

**Country of origin:** Brazil

**Notes:** Promotional issue. Issued in a standard case with a 6 page fold out slick. Promotional stamp "EXEMPLAR PROMOCIONAL VENDA PROIBIDA" printed on CD and rear cover. "Fabricado pela MICROSERVICE Microfilmagens e Reproduções Técnicas Ltda. ... São Paulo "CBS" (logo) Marcas Registradas – Indústria Brasileira ..." printed on rear cover and on rear of fold out slick. "FABRICADO PELA - MICROSERVICE MICROFILMAGENS E REPRODUÇÕES TÉCNICAS LTDA. ... SÃO PAULO - INDÚSTRIA BRASILEIRA." printed on top edge of the CD.



### Delicate Sound Of Thunder



**Label:** CBS on CDs, COLUMBIA on spines, rear cover and rear fold out slick

**Catalog numbers:**

700128-9 / 2-463161 (on case spine)

700128 2-463161 (on CD 1)

700129/ 2-463161 (on CD 2)

**Country of origin:** Brazil

**Notes:** Promotional issue. Issued in a thick box with a 4 page fold out slick. CBS printed left of centre hole on the CDs. Promotional stamp "EXEMPLAR PROMOCIONAL VENDA PROIBIDA" printed on CDs and rear cover. "Fabricado pela MICROSERVICE Microfilmagens e Reproduções Técnicas Ltda. ... São Paulo "Sony Music" – Marca Registrada – Indústria Brasileira ..." printed on rear cover and on rear of fold out slick. "FABRICADO PELA MICROSERVICE - MICROFILMAGENS E REPRODUÇÕES TÉCNICAS LTDA. ... SÃO PAULO - INDÚSTRIA BRASILEIRA." printed on top edge of the CDs.

### The Division Bell



**Label:** Columbia

**Catalog numbers:**

758.193/2-476581 (on case spine)

5 099747 658129 (barcode on rear cover)

758.193/2-476581 (on rear cover)

758.193/2-476581 (on CD)

**Country of origin:** Brazil

**Notes:** Promotional issue. Issued in a standard case with a 24 booklet. Promotional stamp "EXEMPLAR PROMOCIONAL VENDA PROIBIDA" printed on CDs and rear cover. "Fabricado por Sony Music Entertainment (Brasil) Ind. Com. Ltda. ... Rio de Janeiro - Indústria Brasileira ..." printed on rear cover. "FABRICADO POR SONY MUSIC ENTERTAINMENT (BRASIL) INDÚSTRIA COMÉRCIO LTDA. ... RIO DE JANEIRO - INDÚSTRIA BRASILEIRA." printed on top edge of the CD.

